

LEVELER

E-Newsletter from the Lake Ontario Riparian Alliance
Issue 51 January 21, 2016

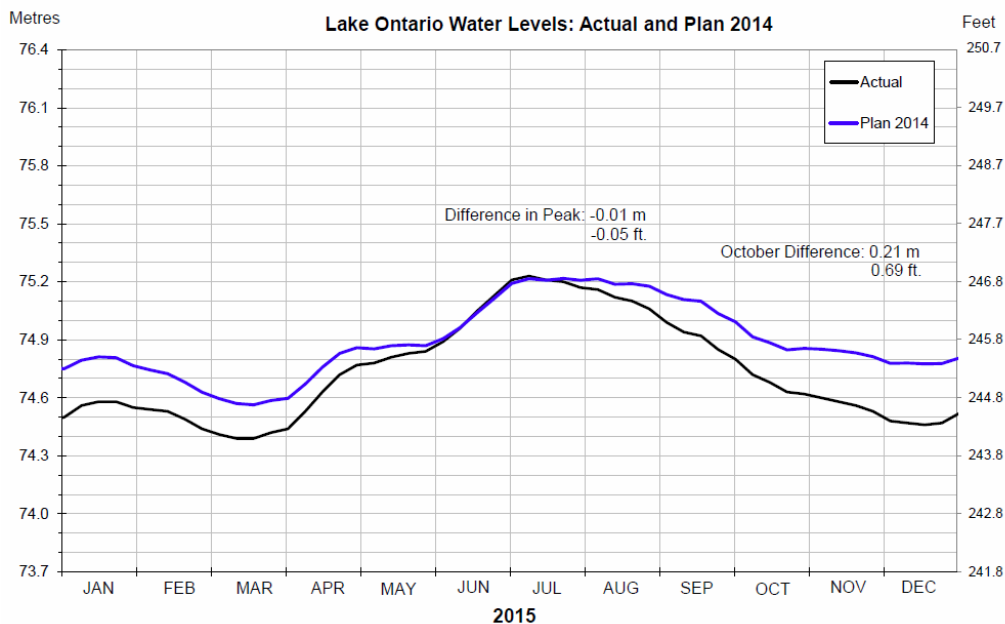
Grassroots Public Advocacy for the Protection, Restoration and Conservation of Lake Ontario
Beaches and Riparian Property

In this issue:

- Would History Repeat Itself If Plan 2014 Was The Operational Plan? You Can Be The Judge!
-

“Those who do not learn from history are doomed to repeat it.” – George Santayana

The following chart diagram illustrates the fact that if we had Plan 2014 in operation at this time, Lake Ontario would have been a foot (12 inches) higher in December 2014, when it was actually near to its Long Term Average (LTA) at that time.

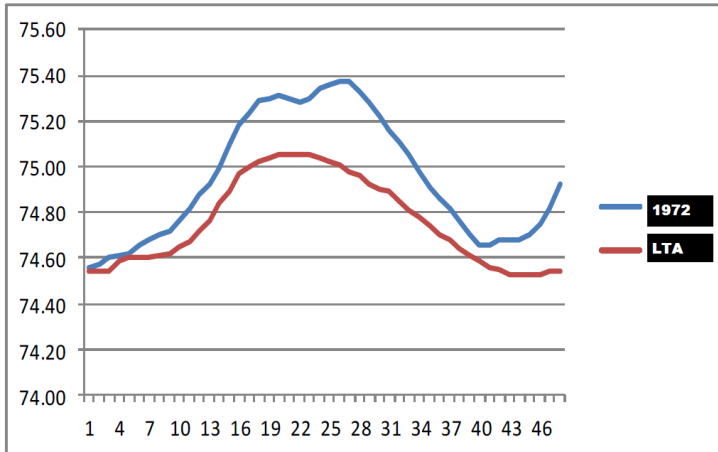


Note: Above graph was obtained via the IJC (International Joint Commission) Twitter acct on January 13, 2016

The following chart diagrams illustrate that, in the Autumn preceding the three worst years for Spring Flooding ('73, '93, '97), the lake was a foot or more above its Long Term Average (LTA).

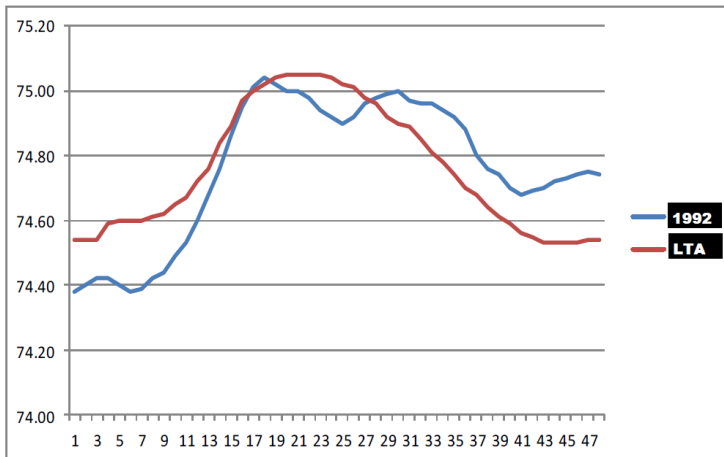
Additionally, based on information from the Lake Ontario-St. Lawrence River Study Coastal Technical Group, if the St. Lawrence River Board of Control did not start deviations to reduce Lake Ontario Lake Levels in the Fall of 1992, which would not be allowed under Plan 2014, the Lake would have crested at 253.27 feet (77.2m). Any deviations would not be allowed with Plan 2014 until the trigger for emergency relief was surpassed, two months later in the middle of winter, when actions by the Control Board are severely hampered by concerns over ice cover.

Fall 1972



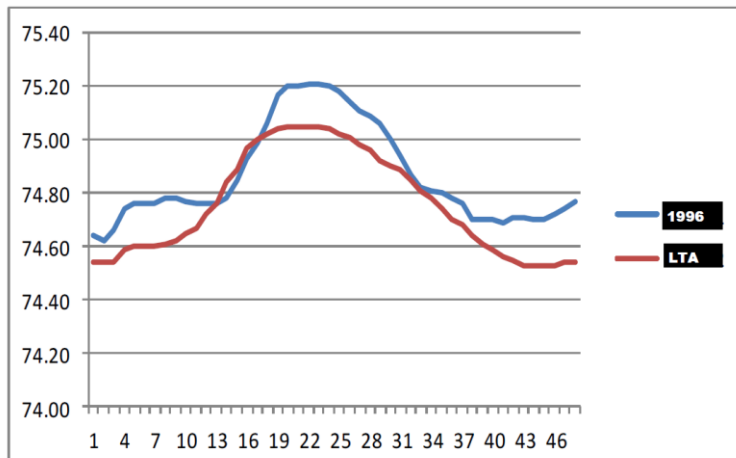
Damages in the Spring of 1973 surpassed \$87 million in today's dollars, in just Monroe and Jefferson Counties alone!

Fall 1992



Extensive damages along entire south shore in the Spring of 1993

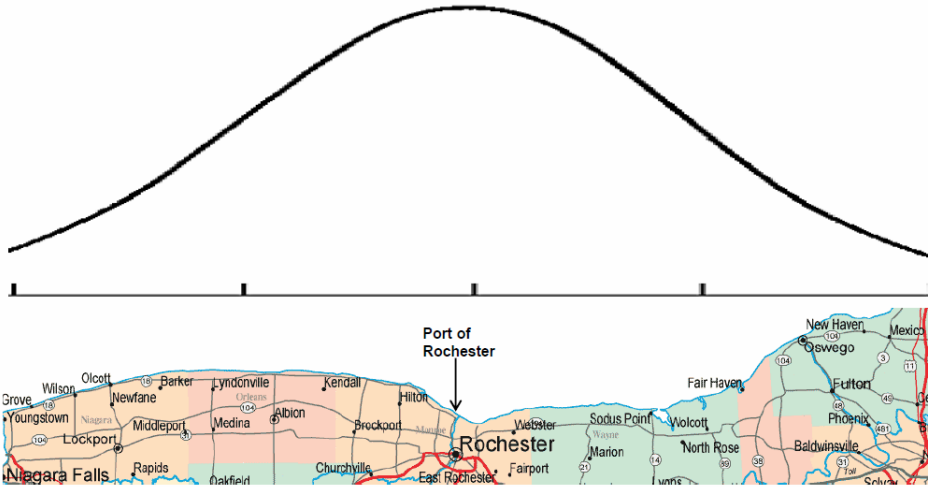
Fall 1996



Damages in Niagara County alone surpassed \$14 million dollars (\$20.6 million in today's dollars) in the Spring of 1997.

Damage Distribution to Lake Ontario South Shore with Plan 2014

*IJC damage estimate \$2-3 million per year based on LOSL Study 2000-2006
*LORA estimate \$5-6 million per year in light of outdated data



Additionally, as always, the LORA website has all past newsletters posted at:
<http://www.loranet.org/> and <http://www.loranet.org/levelerarchive/pastissues.htm>